



ISO 9001
OBAC/002/SZJ/23



44-362 Rogów
ul. Raciborska 79
tel./fax 32-4512444, 32-4512010
www.izol-plast.rogow.pl

INDEX CARD

Reduction of cable entries type WMg - ** / WK-M **

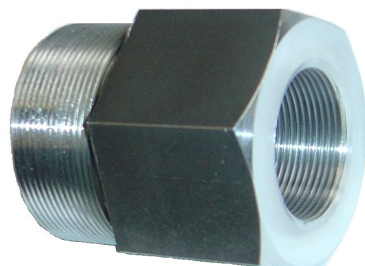
Construction and application :

WMg - .. / WK-M .. cable inlet reducers are intended for inserting cables and wires with a circular cross-section into the inside of flameproof electrical equipment, thickness. I and subgroup II C and dustproof III C. Depending on the execution of the inlet threaded hole, reductions of the **WMg - .. / WK-M ..** type enable the insertion of cables or wires with a diameter from Ø6 mm to Ø22 mm. The **WMg - .. / WK-M ..** types of cable entries are designed in accordance with the applicable safety requirements specified in the relevant industrial standards.

Cable inlet reductions type **WMg - .. / WK-M ..** are made by turning from a steel bar, St3S grade with a hexagonal cross-section. On the one hand, the reducers have an incised external thread compatible with the design of the **WMg** inlet socket, and on the other hand, an incised internal thread compatible with the design of the **WK-M** type inlet. The ATEX marking is engraved on the outside of the body.

Installation of reduction:

The reducer should be mounted in the previously made socket, by screwing it into the threaded hole prepared for the **WMg -...** inlet. After placing the reducer in the housing of the flameproof device, insert a rubber gasket and a washer in the threaded hole of the reducer, which together with a screw-in gland of the **WK-M ..** type cause full choking of the cable or wire.



Technical parameters of the WMg - .. / WK-M .. reduction:

Technical parameters of the WMg - .. / WK-M .. reduction:	
Reduction operating temperature range:	-10°C ÷ +80°C
Level of security:	IP 65
Relative humidity:	to 95 %
Work location:	any
Environment:	moderately chemically aggressive
Feature of explosion-proof structure:	I M2 II 2G II 2D
ATEX marking:	Ex d I Mb Ex d IIC Gb Ex tb IIIC Db



ISO 9001
OBAC/002/SZJ/23



44-362 Rogów
ul. Raciborska 79
tel./fax 32-4512444, 32-4512010
www.izol-plast.rogow.pl

INDEX CARD

Reduction of cable entries type WMg - ** / WK-M **

Series of reductions of cable entries type WMg - ** / WK-M **

Reduction type	Inlet type WMg- ..	Key thread WMg- ..	Inlet type WK-M ..	Key thread WK-M ..	Design of the WK-M .. inlet	Maximum cable outer diameter
R-WMg-1/M20	WMg-1	G 1 1/8"	WK-M20	M20x1,5	1	Ø6 - Ø8
					2	Ø8 - Ø10
R-WMg-1/M22	WMg-1	G 1 1/8"	WK-M22	M22x1,5	1	Ø10 - Ø12
					2	Ø12 - Ø14
R-WMg-1/M28	WMg-1	G 1 1/8"	WK-M28	M28x1,5	1	Ø14 - Ø16
					2	Ø16 - Ø18
R-WMg-1/M32	WMg-1	G 1 1/8"	WK-M32	M32x1,5	1	Ø18 - Ø20
					2	Ø20 - Ø22
R-WMg-2/M20	WMg-2	G 1 1/2"	WK-M20	M20x1,5	1	Ø6 - Ø8
					2	Ø8 - Ø10
R-WMg-2/M22	WMg-2	G 1 1/2"	WK-M22	M22x1,5	1	Ø10 - Ø12
					2	Ø12 - Ø14
R-WMg-2/M28	WMg-2	G 1 1/2"	WK-M28	M28x1,5	1	Ø14 - Ø16
					2	Ø16 - Ø18
R-WMg-2/M32	WMg-2	G 1 1/2"	WK-M32	M32x1,5	1	Ø18 - Ø20
					2	Ø20 - Ø22
R-WMg-1a/M20	WMg-1a	M38x1,5	WK-M20	M20x1,5	1	Ø6 - Ø8
					2	Ø8 - Ø10
R-WMg-1a/M22	WMg-1a	M38x1,5	WK-M22	M22x1,5	1	Ø10 - Ø12
					2	Ø12 - Ø14
R-WMg-1a/M28	WMg-1a	M38x1,5	WK-M28	M28x1,5	1	Ø14 - Ø16
					2	Ø16 - Ø18
R-WMg-1a/M32	WMg-1a	M38x1,5	WK-M32	M32x1,5	1	Ø18 - Ø20
					2	Ø20 - Ø22
R-WMg-2a/M20	WMg-2a	M48x1,5	WK-M20	M20x1,5	1	Ø6 - Ø8
					2	Ø8 - Ø10
R-WMg-2a/M22	WMg-2a	M48x1,5	WK-M22	M22x1,5	1	Ø10 - Ø12
					2	Ø12 - Ø14
R-WMg-2a/M28	WMg-2a	M48x1,5	WK-M28	M28x1,5	1	Ø14 - Ø16
					2	Ø16 - Ø18
R-WMg-2a/M32	WMg-2a	M48x1,5	WK-M32	M32x1,5	1	Ø18 - Ø20
					2	Ø20 - Ø22



ISO 9001
OBAC/002/SZJ/23



44-362 Rogów
ul. Raciborska 79
tel./fax 32-4512444, 32-4512010
www.izol-plast.rogow.pl

INDEX CARD

Reduction of cable entries
type WMg - ** / WK-M **

Certificate:

R-WMg - ** / WK-M ** cable inlet reductions have the EU type examination certificate: **OBAC14ATEX199X** of **30/04/2014**. - made by OBAC; Research, Atestation and Certification Center Sp. z o. o.

The basic requirements of safety and health protection were implemented by meeting the requirements of the following standards:

- PN-EN 60079-0:2013,
- PN-EN 60079-1:2010,
- PN-EN 60079-31:2011.

The **WMg - ** / WK-M **** reducers are marked with:



OBAC 14ATEX199X
I M2 Ex d I Mb
II 2G Ex d IIC Gb
II 2D Ex tb IIIC Db
1461